

APRIL 2015

# Commuting to Dyce



TRAIN



BUS



WALKING



CYCLING



# Dyce is an established major employment hub in Aberdeen City & Shire.

With three new Business Parks and growth at Aberdeen International Airport, the area is prospering and the number of commuters is increasing.

Could public transport be introduced as part of your weekly commute?

This document provides an overview of how to plan a commute to Dyce by train, bus, liftshare, walking or cycling.



**City  
Buses**

**Train**

**Walking**

**Country  
Buses**

**Jet  
Connect 80**  
(Dyce Station Bus Link)

**Cycling**

# Options at a glance

## to Dyce Business Parks



**TRAIN**

**To Dyce Station from Inverurie, Aberdeen or Stonehaven**

+ 10 mins by bus  
or 10 mins cycle



**JET CONNECT 80**

**Dyce Station**

**Bus** Direct rail  
link service



**CITY**

**Stagecoach Jet 727** Direct frequent city centre service

**First Bus 27** Direct city centre service operating peak times only

**First Bus 17 & 18** Frequent city centre and city south service  
+25 mins walk

**Stagecoach 10 & 37** Frequent service from city centre  
+15 mins walk



**COUNTRY**

**On the A96, Stagecoach Routes 10 & 37** + 15 mins walk

**On the A947, Stagecoach Routes 35 & 305**

+ Jet Connect 80 Rail Bus or 25 mins walk

**Direct services from Westhill (Bain's 777) and Peterhead/  
Ellon (Kineil 747) operating peak times only**



**LIFTSHARE**

**Employer carshare schemes** (if available)

or **Getabout** online  
car sharing advice  
and free liftshare  
registration scheme



**CYCLING**

**National Cycle Route 1 through Dyce** with

links to Business Parks  
via Market Street,  
Stoneywood

**Cycle route from Dyce  
Station** 10 mins



**WALKING**

**25 mins walking connections** from Market Street,  
Stoneywood (A947)

**15 mins walking connection** from A96 recommended in  
daylight hours only

**Lunchtime walks or running** in nearby forest routes or  
footpaths through Craibstone, Rowett or Stoneywood

# How to get to Dyce

## TRAIN

- **2 trains per hour** at peak times
- **Journey times**
  - 12 mins from Inverurie
  - 10 mins from Aberdeen
  - 35 mins from Stonehaven (direct service)
- **Connections**
  - Jet Connect 80 frequent rail link bus service direct to Dyce Business Parks
  - Or, 10 mins off-road cycle. Rentable cycle lockers available at Dyce Station.



## JET CONNECT 80

- Frequent rail link bus service direct to Airport, Dyce Business Parks & Kirkhill
- **Journey times**
  - 10 mins to Dyce Business Parks



## BUSES

- **From City Centre**
  - **Jet 727** frequent direct service every 12 mins at peak times
  - **27** direct peak time only service
  - **17 & 18** service direct from City South to Stoneywood + 25 mins walk
  - **10 & 37** services to the A96 + 15 mins walk recommended in daylight hours
- **A96 is well serviced** by the **10 & 37** from Blackburn, Kintore, Inverurie or Huntly (**10 only**) + 15 mins walk recommended in daylight hours
- **A947 is well serviced** by the **35, 305 & 747** from the North
- The **A944 has a direct peak time** only service by the **777** from Westhill
- **A90 has a direct peak time** only service by the **747** from Peterhead



## BUS LINKS

Bus services to A96 or A947 require a bus transfer or walk to Dyce Business Parks

### Bus Link:

- From the **A947** on the **Jet Connect 80** at Dyce Station

### Walking Links:

- From the **A96** at **Craibstone a 15 mins walk** via footpaths and A96 underpass - recommended in daylight hours only
- From the **A947 at Stoneywood a 25 mins walk** via Market Street and Wellheads Drive



### Country Buses

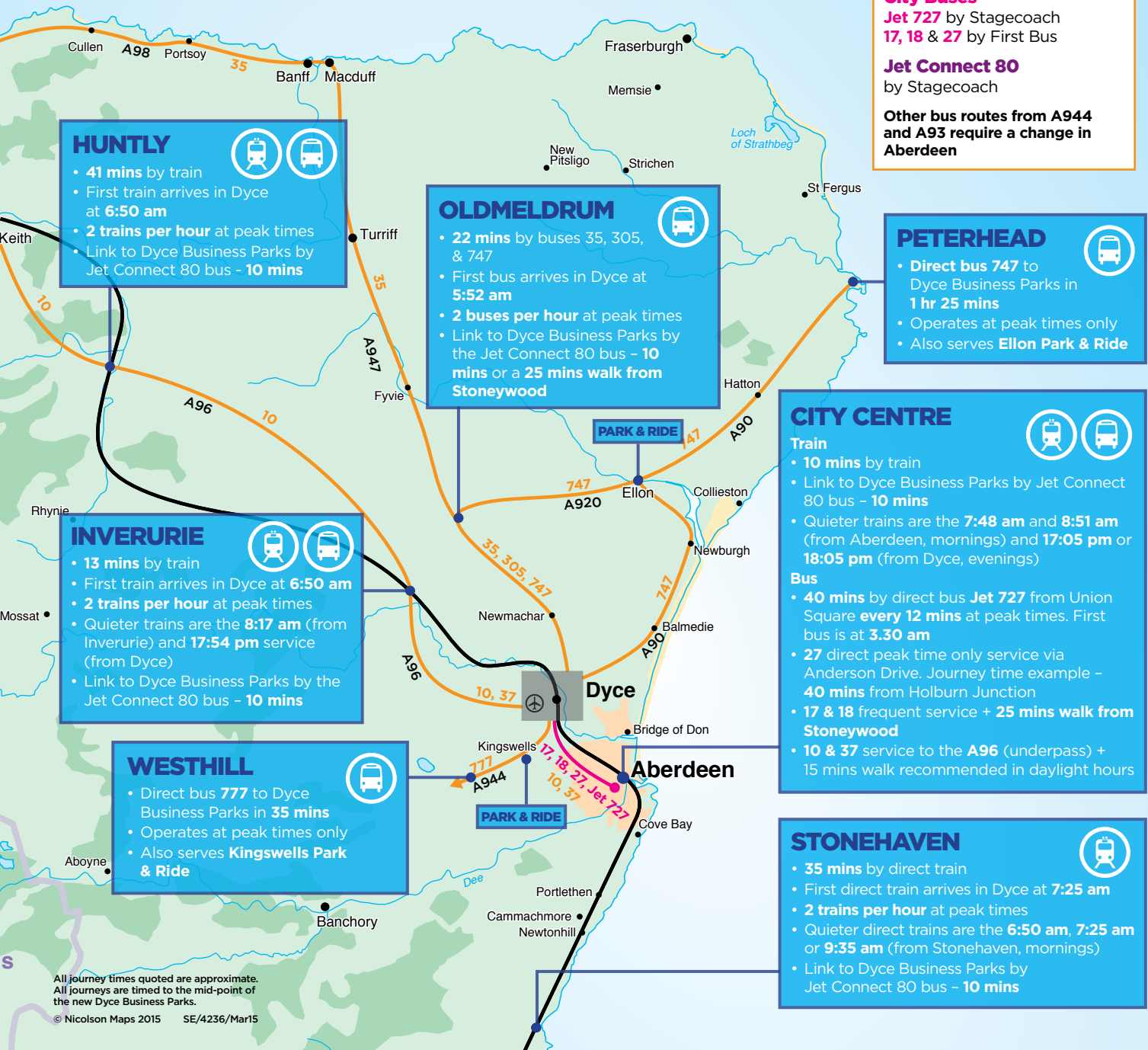
**10, 35, 37 & 305** by Stagecoach  
**777** by Bain's Coaches  
**747** by Kineil Coaches

### City Buses

**Jet 727** by Stagecoach  
**17, 18 & 27** by First Bus

**Jet Connect 80** by Stagecoach

**Other bus routes from A944 and A93** require a change in Aberdeen



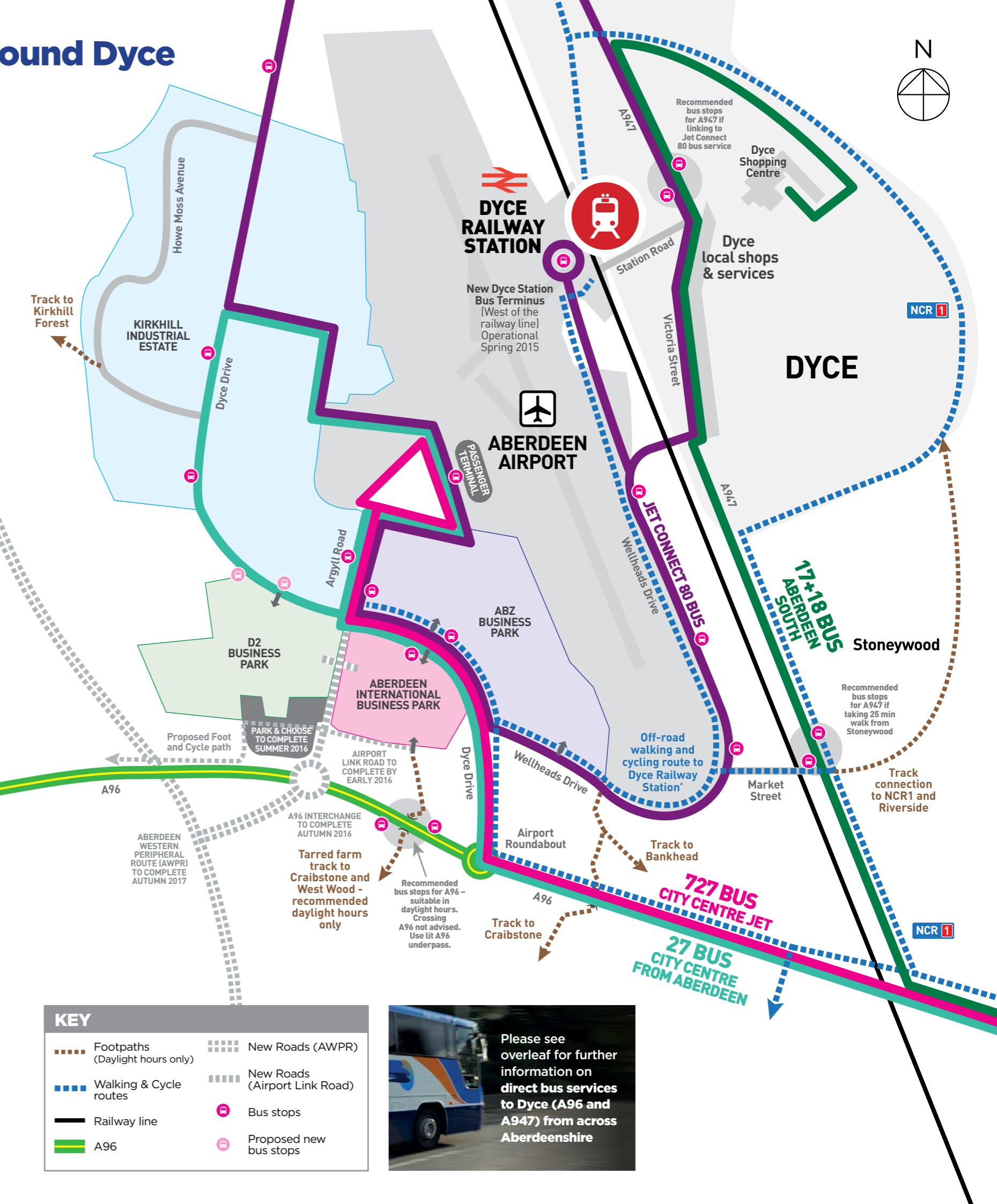
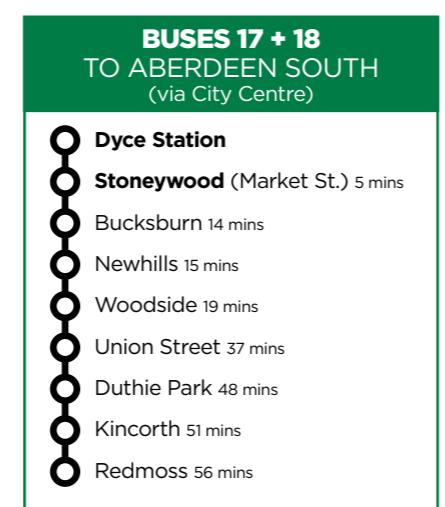
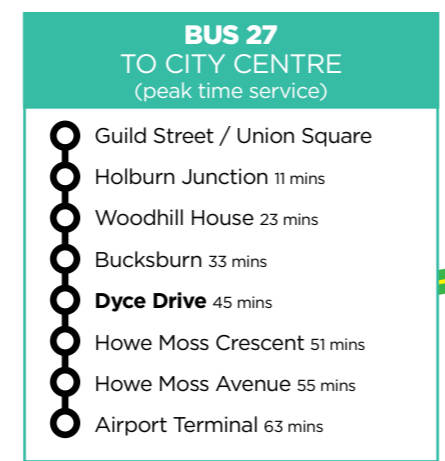
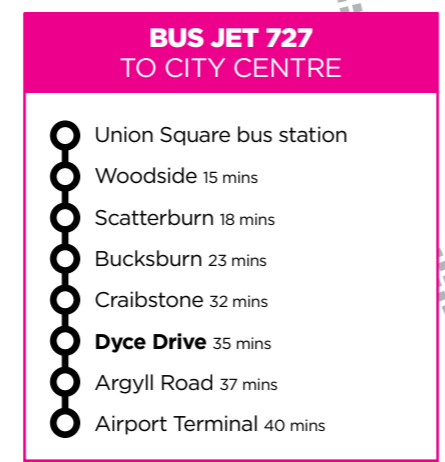
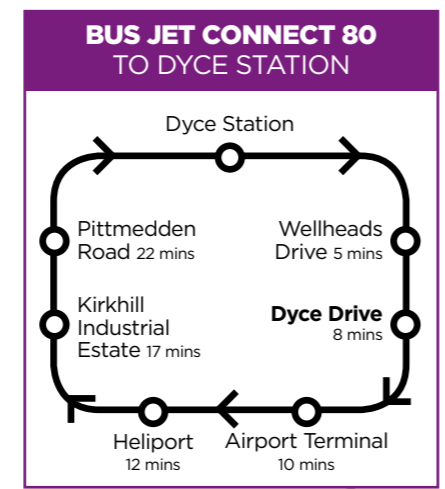
All journey times quoted are approximate. All journeys are timed to the mid-point of the new Dyce Business Parks.

© Nicolson Maps 2015 SE/4236/Mar15

# Lunchtime walks



# How to get around Dyce



# Improvements to your journey

- Spring 2015** New larger Dyce Station Bus Terminus due to complete (west of the railway line) - improving the Jet Connect 80 bus service.
- Spring 2015** New Scotrail operator, Abellio commences - rolling out proposed train improvements.
- Early 2016** Airport Link Road due to complete - providing a new dual carriageway, walking and cycle routes accessed from Dyce Drive.
- Summer 2016** A96 Park & Choose due to complete - providing a new public transport interchange with bus user walking and cycle connections to Dyce Business Parks & Airport
- Autumn 2016** A96 Interchange due to complete - linking the A96 to the Park & Choose and Dyce Drive at Argyll Road.
- Autumn 2017** Expected completion of AWPR - completing all new transport links from the AWPR to Dyce Business Parks & Airport

# Did you know?

- Introduce **exercise into your commute** - walking burns approx 100 calories every 20 minutes.
- A switch to public transport need not be radical - consider introducing **as part of your weekly commute**, 1 or 2 days per week.
- Bus travel **costs can be discounted** through employer initiatives such as First Bus's **Corporate Travel Club** or by purchasing initiatives such as Stagecoach's **Flexirider** ticket.
- There are over 38 million empty seats every day on UK roads. Consider **Liftshare** to **halve fuel costs** and **reduce car wear & tear**.

### KEY

- Footpaths (Daylight hours only)
- Walking & Cycle routes
- Railway line
- A96
- New Roads (AWPR)
- New Roads (Airport Link Road)
- Bus stops
- Proposed new bus stops



# Further information

## GENERAL TRAVEL INFORMATION

[www.travelinescotland.com](http://www.travelinescotland.com)

## GET ABOUT ABERDEEN & ABERDEENSHIRE

[www.get-about.com](http://www.get-about.com)

### TRAINS

[www.nationalrail.co.uk](http://www.nationalrail.co.uk)

### JET CONNECT 80

[www.stagecoachbus.com](http://www.stagecoachbus.com)

### CITY BUSES

[www.firstgroup.com](http://www.firstgroup.com)

[www.stagecoachbus.com](http://www.stagecoachbus.com)

### COUNTRY BUSES

[www.stagecoachbus.com](http://www.stagecoachbus.com)

[www.bainscoaches.co.uk](http://www.bainscoaches.co.uk)

[www.kineilcoachesltd.co.uk](http://www.kineilcoachesltd.co.uk)

### LIFTSHARE

[www.getabout.liftshare.com](http://www.getabout.liftshare.com)

### WALKING/CYCLING

[www.walkit.com/aberdeen](http://www.walkit.com/aberdeen)

[www.aberdeencycleforum.org.uk](http://www.aberdeencycleforum.org.uk)

**Fares and season ticket costs are available  
at the above websites**

